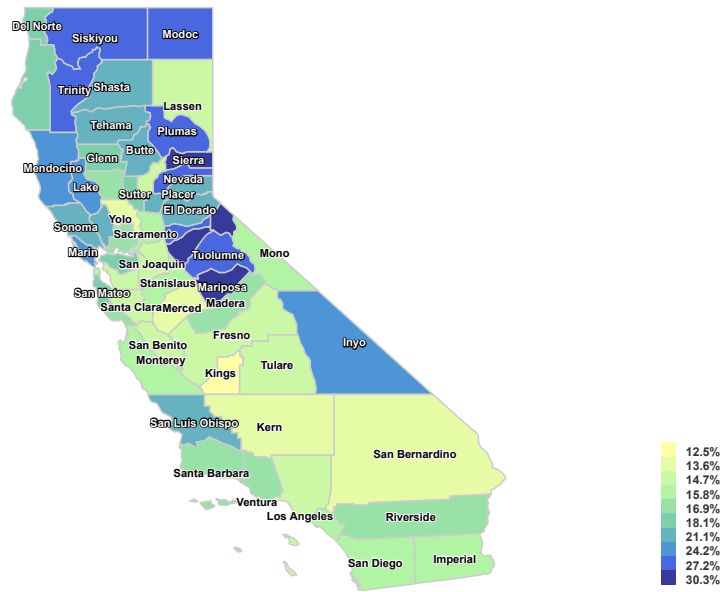


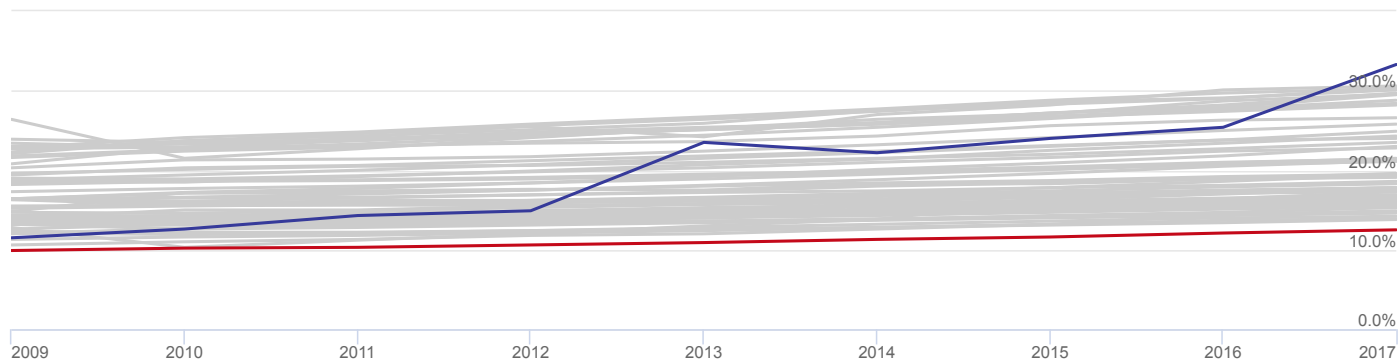
# Economic Indicators

POPULATION 16  
AND OVER  
SHARE: AGE 65+  
(ACS 5YR)



# Trend

Population 16 and Over Share: Age 65+ (ACS 5yr) – 2017



**16.7%**

California

SELECTED

**12.5%**

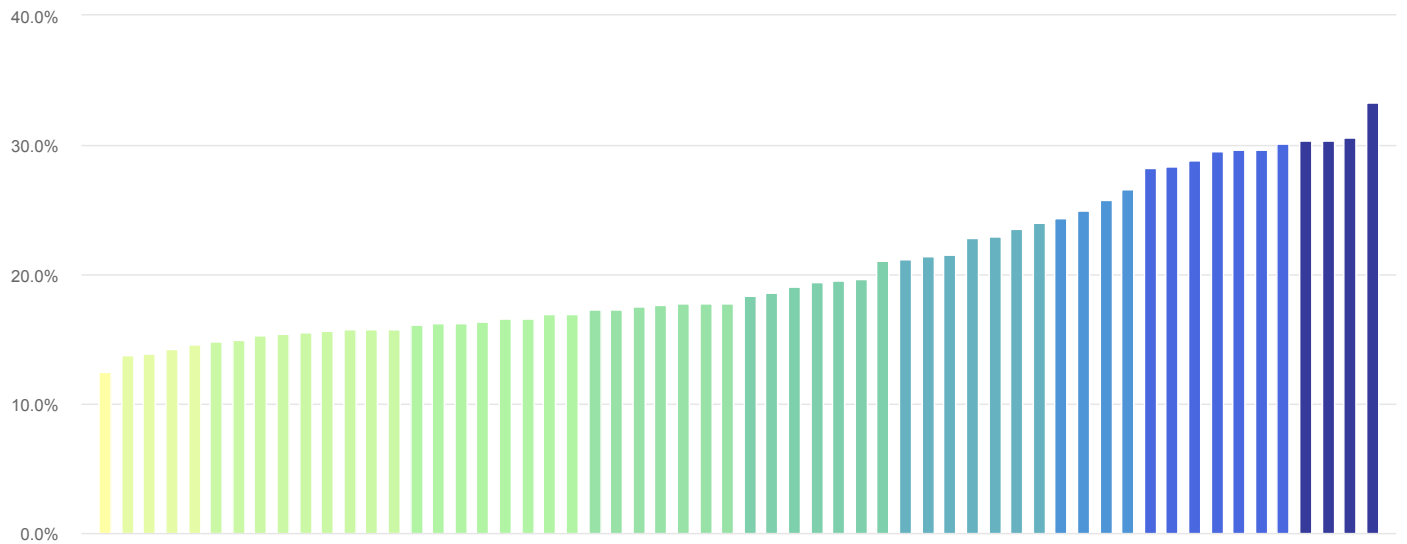
LOW  
Kings County

**33.3%**

HIGH  
Alpine County

# Ranking

## Population 16 and Over Share: Age 65+ (ACS 5yr) – 2017



**16.7%**

California

SELECTED

**12.5%**

LOW  
Kings County

**33.3%**

HIGH  
Alpine County