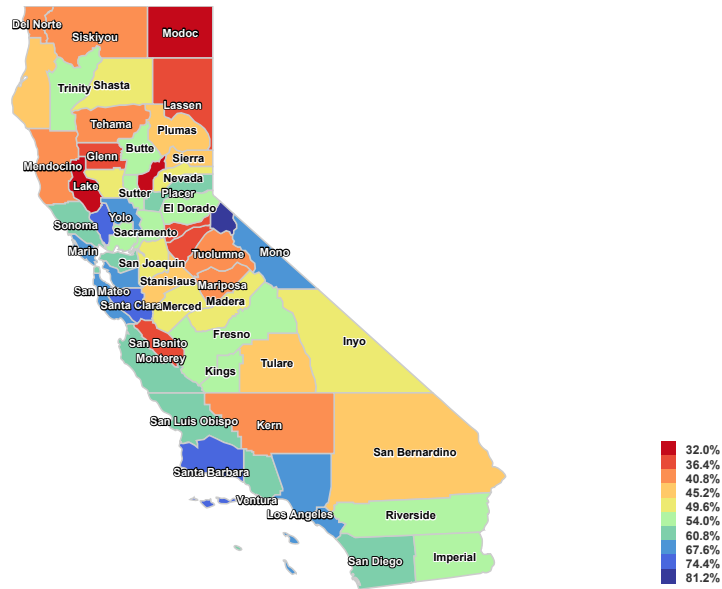


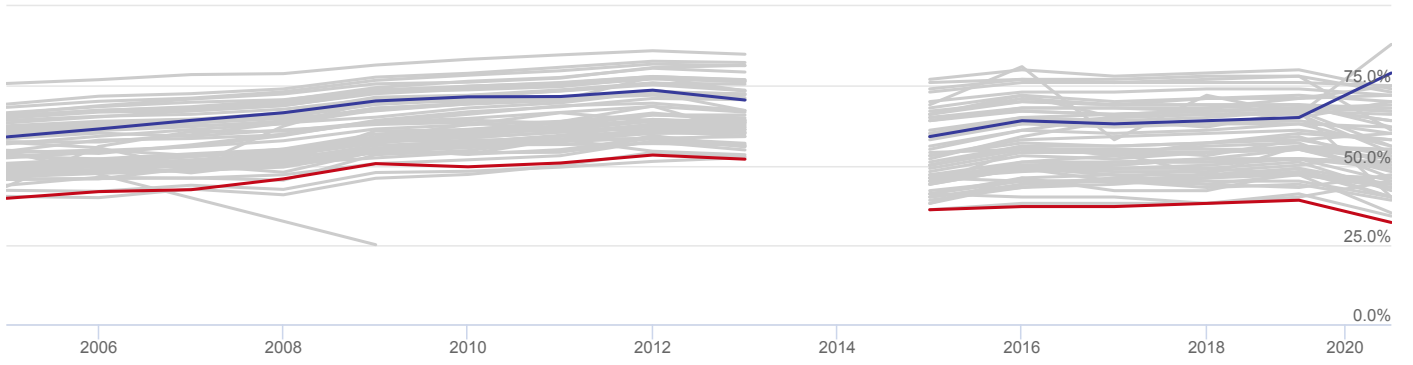
Economic Indicators

K-12 GRADE
LEVEL: ENGLISH
WHITE



Trend

K-12 Grade Level: English White – 2021



60.0%

California

SELECTED

32.0%

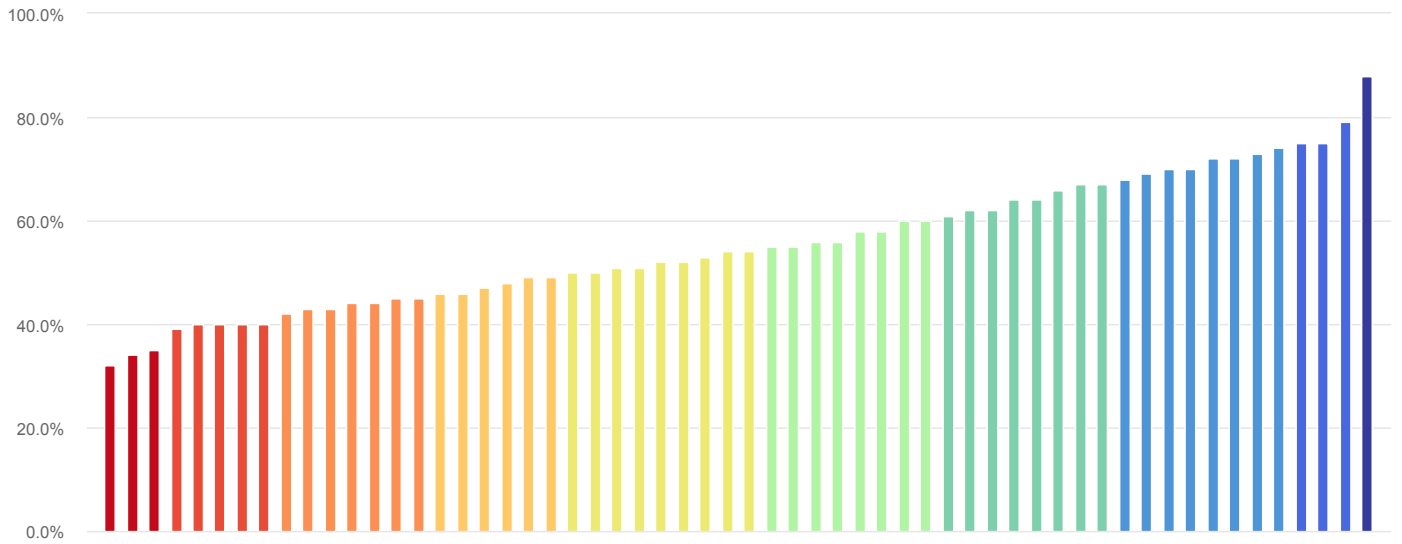
LOW
Lake County

88.0%

HIGH
Alpine County

Ranking

K-12 Grade Level: English White – 2021



60.0%

California

SELECTED

32.0%

LOW
Lake County

88.0%

HIGH
Alpine County